

SatVu: High resolution thermal data for a safer and more sustainable earth

ESA Commercialisation Days: Space Forum for Green Energy

ESA COMMERCIALISATION GATEWAY

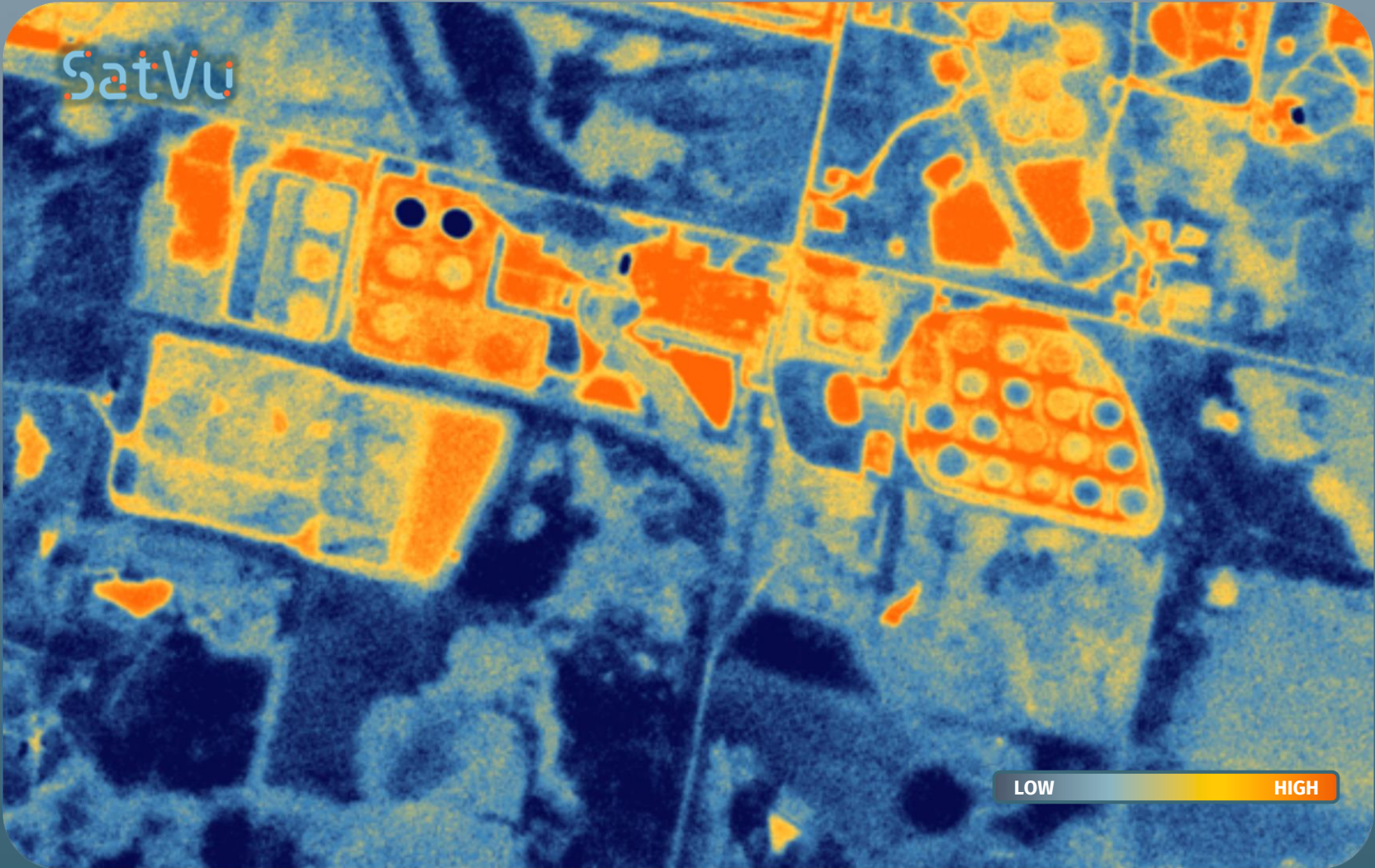
SPACE FOR BUSINESS
BUSINESS FOR SPACE

Camilla Taylor

CFO, SatVu

15 April 2024

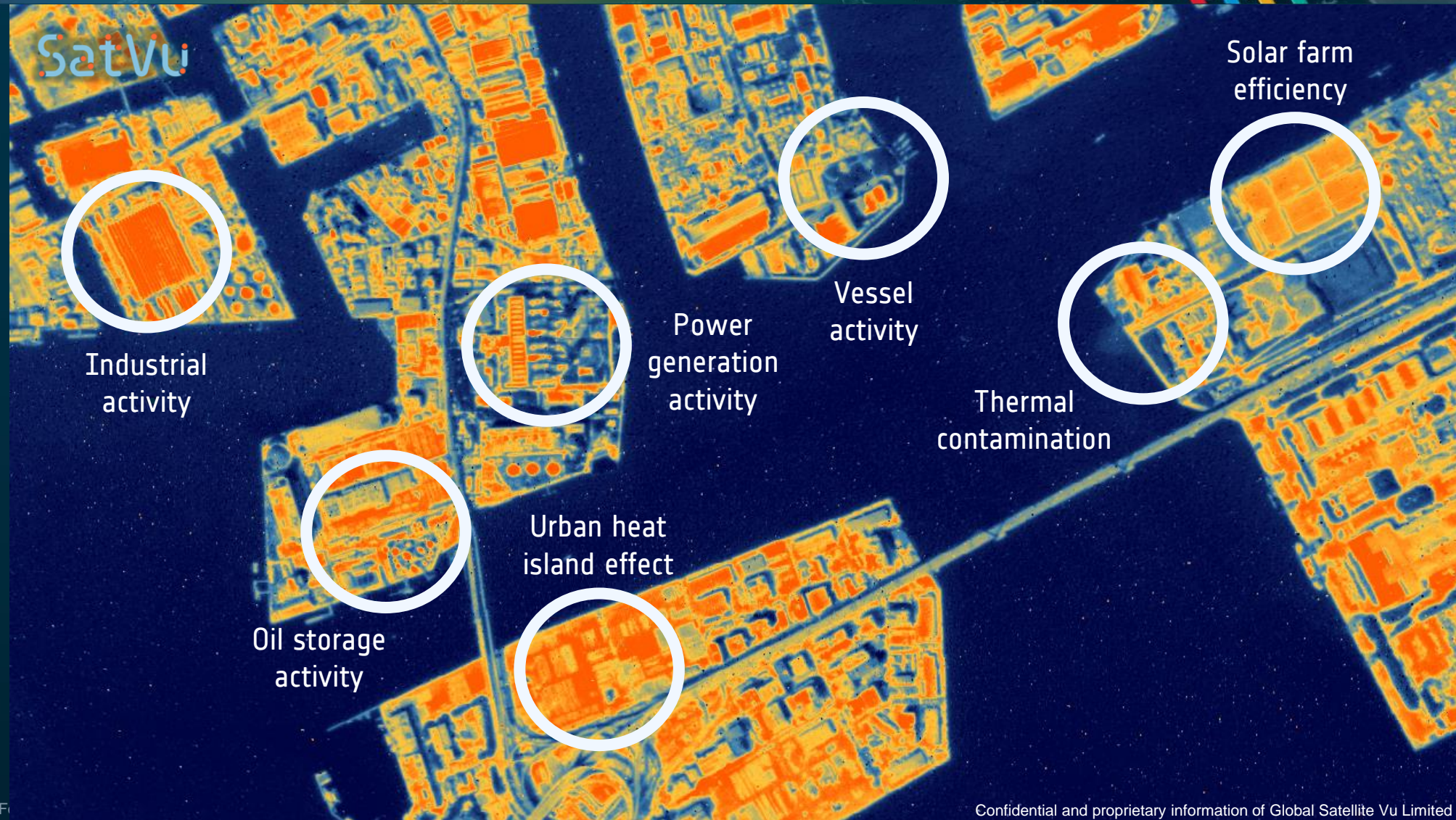
UNLOCKING THE FULL POTENTIAL OF INFRARED

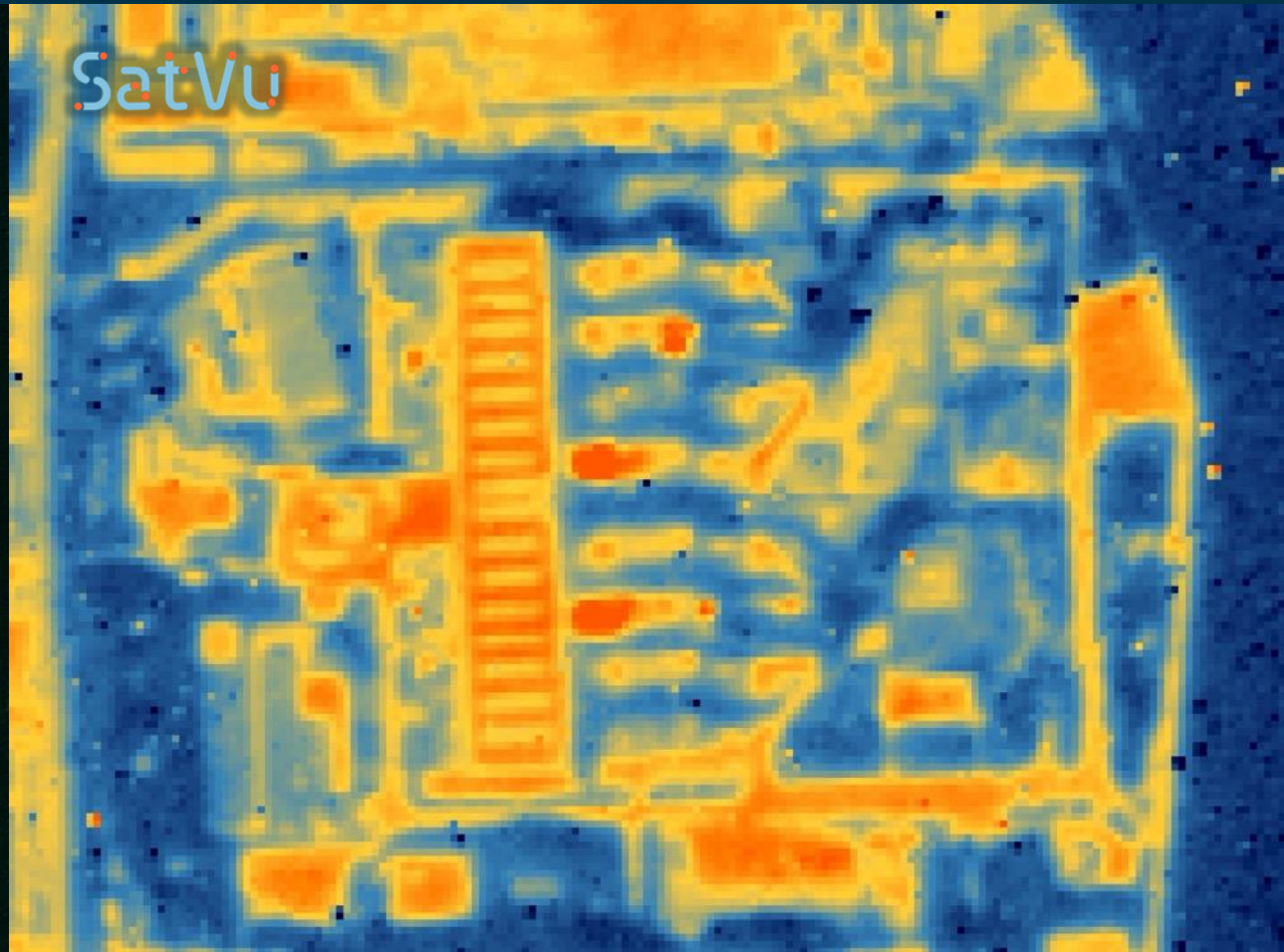


ESA UNCLASSIFIED – For ESA Official Use Only

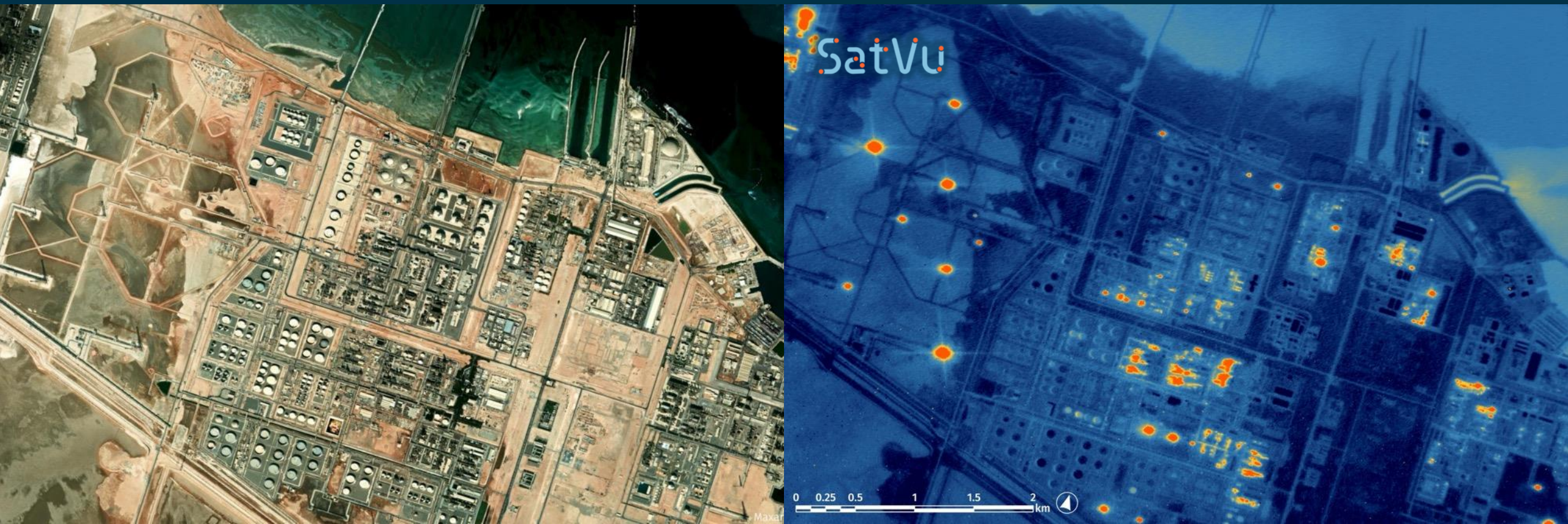


YOKOHOMA, JAPAN – CAPTURED BY HOTSAT-1

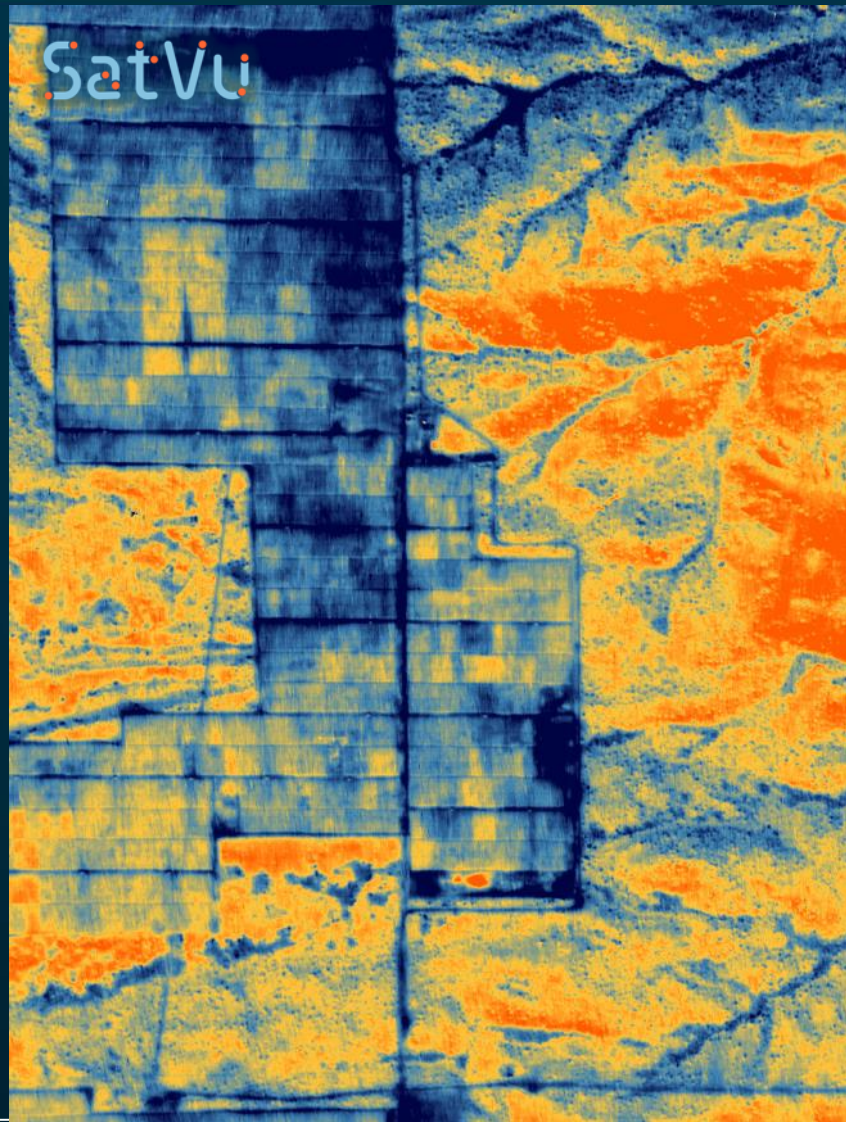




OIL REFINERY - SUBPLANT ACTIVITY



SOLAR FARM - FAULT DETECTION



Solar Farm Fault Detection Prototype

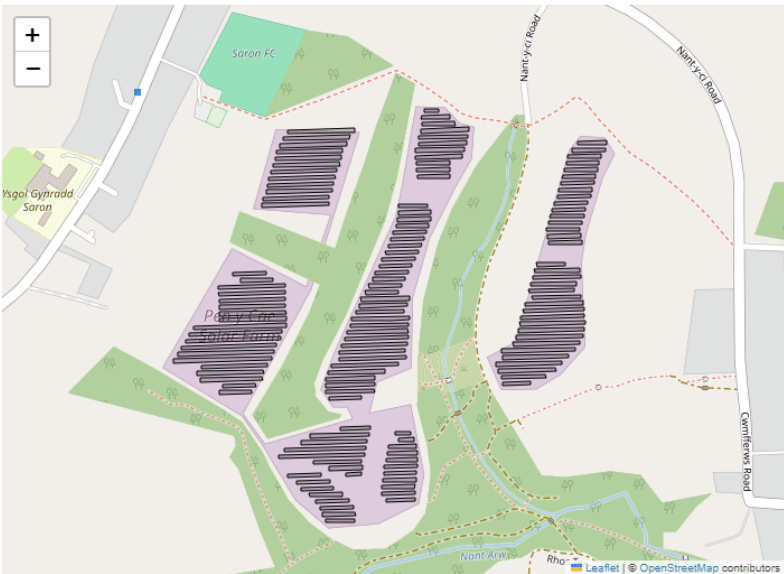
A SatVu prototype satellite-based monitoring service to spot faults in photovoltaic (PV) arrays at commercial solar farms by detecting and recognising temperature anomalies.

Select Solar Farm

Pen y Cae Solar Farm

Farm Location - Pen y Cae Solar Farm

Coordinates: (51.7864252, -4.0295536)



€42m raised to date

8 figure booking pipeline and path to profitability

>€10m grants received / confirmed

Team experienced in industry, use cases and scaling

Tech moat proprietary, low risk technology

Proven in space with HotSat-1

Critical mass with 9 satellite constellation, unlocked with next funding round