



SMART HEALTH TRACKING

Improving health and reducing healthcare costs with the early detection of preventable disease

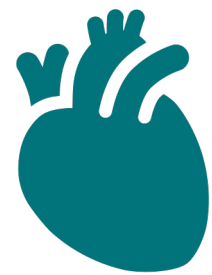
Gil Travish (Founder & CEO): invest@vibo.health +1 310 435-7172



VALUE PROPOSITION



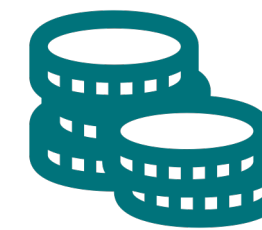
WE PROVIDE AN EARLY WARNING SYSTEM TO HELP DETECT DISEASE EARLIER



From heart disease to diabetes, **a substantial proportion of poor health is preventable**



The cost to an individual could be **loss of independence, years of disability, or death**



The cost to society is **\$730 billion annual US health-care spending attributable to modifiable risk factors¹**



Early diagnosis is key. However, current tools are not fit for purpose – inaccessible, costly, and time consuming.



Our solution quickly, easily, and accurately detects disease early

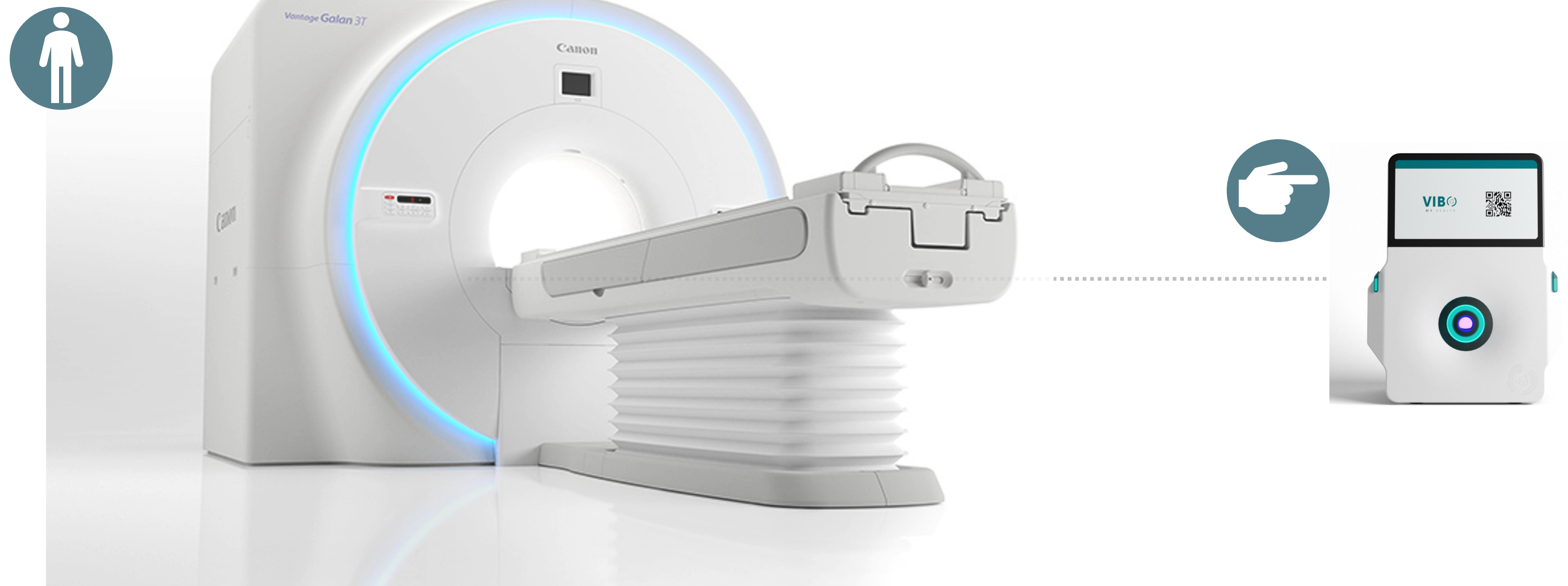
- We **reduce** negative health consequences for individuals
- We **save** healthcare systems, insurers, and companies the cost of preventable disease through early detection

1. <https://pubmed.ncbi.nlm.nih.gov/33007211/>

DIGISCAN™ SCANNING TECHNOLOGY



MINIATURIZATION OF PROVEN DIAGNOSTIC HEALTHCARE TECHNOLOGY



**Magnetic Resonance Spectroscopy (MRS)/
Magnetic Resonance Imaging (MRI)**
Able to determine tissue composition
Large body of clinical data
Diagnosis + therapy planning

DigiScan™
Automatic composition
analysis
Simple; Small; Low-cost

FIRST COMMERCIAL APPLICATION FOR DIGISCAN™: PRE-DIABETES MARKET



DIABETES IS ONE OF THE MOST PERVASIVE & EXPENSIVE DISEASES WORLDWIDE

1 in 10

American adults have a diabetes diagnosis²

1 in 3

American adults have pre-diabetes and 90% of them don't know it³



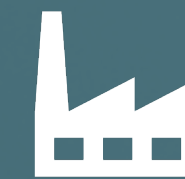
Damages the heart, blood vessels, eyes, kidneys, and nerves



Cost of diabetes in the US is **\$327B** or **\$1 in \$4** of all health care costs⁴



Care for a diabetic person is over **twice the amount** of a person without it⁵



Employers pay **\$8,000 per year** for a diabetic employee. Preventing diabetes gives an ROI over 10 years of **\$55,000 per employee**⁶

2. <https://www.cdc.gov/diabetes/health-equity/diabetes-by-the-numbers.html>

3. <https://www.cdc.gov/diabetes/basics/prediabetes.html>

4. <https://www.cdc.gov/chronicdisease/programs-impact/pop/diabetes.htm>

5. <https://www.cdc.gov/diabetes/basics/quick-facts.html>

6. <https://www.johnshopkinssolutions.com/the-impact-of-prediabetes-on-employers/>

FIRST COMMERCIAL APPLICATION FOR DIGISCAN™: PRE-DIABETES MARKET



DIGISCAN™: NON-INVASIVE DETECTION OF PRE-DIABETES

Currently, blood tests are the only reliable test for diabetes and pre-diabetes detection

However, tests are often used too late, following the appearance of symptoms first reported by a patient.



DigiScan™ can accurately detect and continuously monitor multiple biomarkers (metabolites) validated for the identification and tracking of pre-diabetes, including:

- **Glucose variability**
- **Insulin**
- **A1C**
- **Lipid changes**
- **Lactate**
- **CRP**
- **Advanced glycation end products**

SECONDARY MARKET OPPORTUNITIES



A PLATFORM TECHNOLOGY EASILY ADAPTABLE TO SERVE MULTIPLE USE CASES



INJURY
RECOVERY



OBESITY



DIVER
TRACKING/EXT
REME SPORTS



STRESS
ANALYSIS



SPACE
HEALTH

Exploitation of secondary markets via joint ventures, licencing or future verticals.

DIGISCAN™: HEALTH & PERFORMANCE MONITORING OF ASTRONAUTS



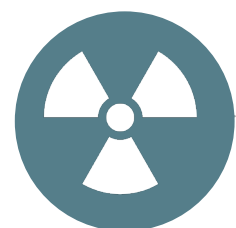
EMPOWERING SPACE AGENCIES FOR LONG-DURATION FLIGHT

SPACE HEALTH & PERFORMANCE

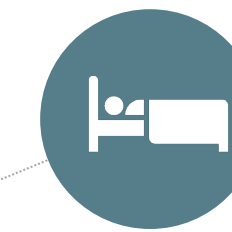


PERFORMANCE

Fat metabolism: DigiScan™ detects increases in free fatty acids, acylcarnitines and glycerol after exercise. (Schranner 2020)

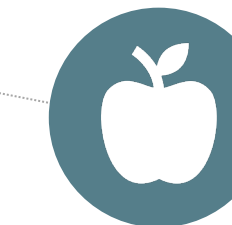


RADIATION DAMAGE



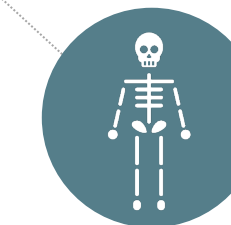
RECOVERY

DigiScan™ detects decreased levels of glutamine and **glutamine/glutamate ratio** are associated with fatigue and suboptimal training capacity in athlete. (Kingsbury, Smith)



NUTRITION

DigiScan™ detects **Omega-3 index** (OM3I) for health and performance. (Pedlar 2019) Increasing the OM3I from ~ 4.5 to ~ 6% through supplementation enhanced cycling. (Hingley 2017)



BONE & MUSCLE LOSS